



tags@wildlifecomputers.com
WildlifeComputers.com
+1 (425) 881-3048

8310 154th Ave NE, Suite 150
Redmond, WA, 98052 USA

TAG AGENT OFFLINE INSTRUCTIONS

Before you can program offline, you must download Tag Agent software and communicate with a tag while connected to the Internet. You can try offline mode by disabling your Internet connection.

What You Need Before You Begin

- A Windows-based computer with Tag Agent Software and USB communications driver installed. You can download both at WildlifeComputers.com
- A Wildlife Computers Data Portal account
- A USB communications cable
- A magnet
- One of every tag type (i.e. SPOT, SPOT-F, MiniPAT) you are taking into the field

While Connected to the Internet

- Open Tag Agent and use the USB communications cable to connect a tag to your computer
- Swipe a magnet near the communication port to establish connection. The tag LED will turn on and the Tag Agent home screen will appear
- Use the Administer Tag tab to familiarize yourself with the tag setting options
- Use the Disconnect Tag tab to select the tag state before unplugging

If you are headed into the field with multiple tag types (i.e. SPOT, SPOT-F, MiniPAT, etc.) be sure to communicate with one of each model while you have an Internet connection. We strongly suggest communicating with each tag in offline mode before going to the field to ensure all programming parameters are visible.

Using Tag Agent in Offline Mode

Open Tag Agent using the normal Tag Agent shortcut found on the website. Working offline is nearly identical to working online. Internet status is displayed in the lower right corner.

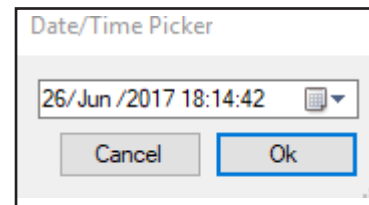
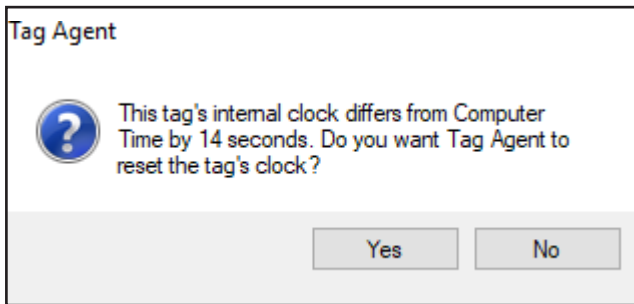
If the Internet connection is spotty, it is best to disable the connection entirely. A partial connection can prohibit settings from loading properly.



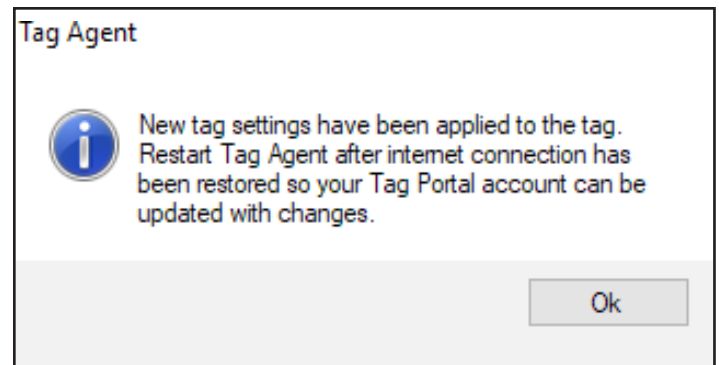
Tag Agent Offline – continued

To Program Tags


- Open Tag Agent and use the USB communications cable to plug a tag into your computer
- Swipe a magnet near the communication port to establish a connection
- If the tag's internal clock needs adjusting, a pop-up box will appear along with a Date/Time picker. **Hint—sometimes the picker hides in the upper left corner of the screen**



- Click the Administer Tag tab and make the required changes to the tag settings
- Click Send Changes to push settings into the tag. A pop-up box will confirm the settings have been applied
- Use the Disconnect Tag tab to select the tag state before unplugging
- Restart Tag Agent when the Internet connection is restored so a record of the selected tag settings will be saved



Creating Local Templates

You can program a group of tags with the same settings using a local template. Click the Administer Tag tab and use the Template Manager  icon in the upper right corner of the screen to create and apply templates.

The Send Changes button must be selected after a template is applied to push settings into a tag.

Contacting Us

If you have any questions or concerns about using Tag Agent in offline mode, please contact us by emailing tags@wildlifecomputers.com or calling +1 (425) 881 3048.