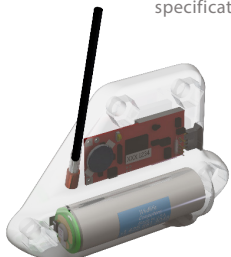


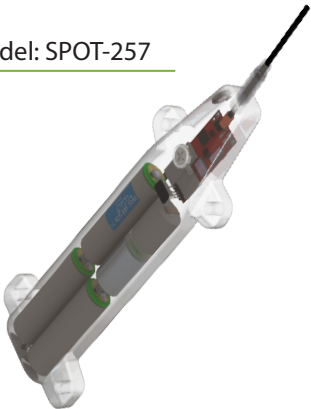
| Model | Argos | Fastloc® | Temperature | Life (days) ¹ | L x W x H (mm) | Weight (g) |
|------------|-------|----------|-------------|--------------------------|----------------|------------|
| SPOT-196 | ✓ | | ✓ | 300 | 81 x 51 x 19 | 49 |
| SPOT-257 | ✓ | | ✓ | 1286 | 162 x 57 x 20 | 160 |
| SPOT-258 | ✓ | | ✓ | 300 | 110 x 45 x 20 | 54 |
| SPOT-364 | ✓ | | ✓ | 300 | 122 x 47 x 19 | 53 |
| SPOT-380 | ✓ | | ✓ | 171 | 88 x 37 x 23 | 62 |
| SPOT-F-338 | ✓ | ✓ | ✓ | 141 | 109 x 53 x 21 | 81 |

1. The above estimated tag life relies on battery variability, temperature, power settings, features utilized, etc. Life estimates are calculated using manufacturers' specifications and assumes 250 transmissions per day and, where applicable, 24 Fastloc® acquisitions per day.

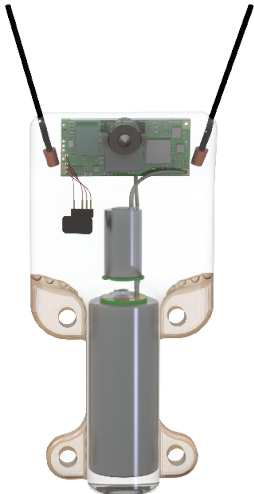


Model: SPOT-196

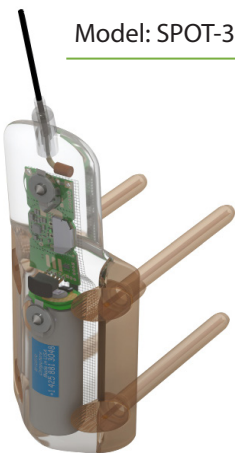
Model: SPOT-257



Model: SPOT-F-338



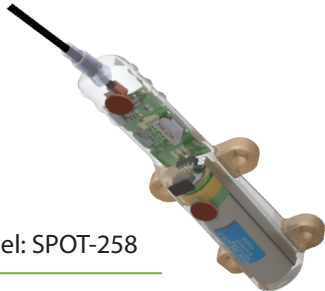
Model: SPOT-364



Model: SPOT-380



Model: SPOT-258



tags@wildlifecomputers.com
WildlifeComputers.com
+1 (425) 881-3048

8310 154th Ave NE, Suite 150
Redmond, WA, 98052 USA

v. 19-08 10.1

This is a small representation of our available tags. Tag features and specifications subject to change without notice. Comparative scale is approximate. Argos antennas and sensor stalks not shown to length. © Wildlife Computers. All rights reserved.

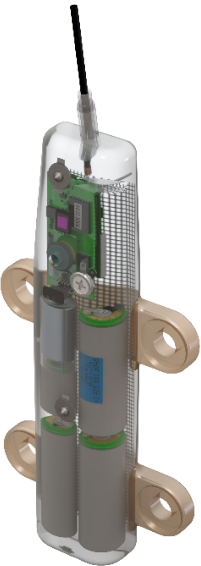
| Model | Argos | Depth | Temperature | Light Level | Life (days) ¹ | L x W x H (mm) | Weight (g) |
|--------------|-------|-------|-------------|-------------|--------------------------|----------------|------------|
| SPLASH10-312 | ✓ | ✓ | ✓ | ✓ | 105 | 133 X 44 X 20 | 74 |
| SPLASH10-336 | ✓ | ✓ | ✓ | ✓ | 105 | 108 x 21 x 41 | 75 |
| SPLASH10-346 | ✓ | ✓ | ✓ | ✓ | 450 | 172 x 84 x 23 | 205 |

1. The above estimated tag life relies on battery variability, temperature, power settings, features utilized, etc. Life estimates are calculated using manufacturers' specifications and assumes 250 transmissions per day and, where applicable, 24 Fastloc® acquisitions per day.

Model: SPLASH10-312



Model: SPLASH10-346



Model: SPLASH10-336



tags@wildlifecomputers.com
WildlifeComputers.com
+1 (425) 881-3048

8310 154th Ave NE, Suite 150
Redmond, WA, 98052 USA

v. 19-08 10.1

This is a small representation of our available tags. Tag features and specifications subject to change without notice. Comparative scale is approximate. Argos antennas and sensor stalks not shown to length. © Wildlife Computers. All rights reserved.