

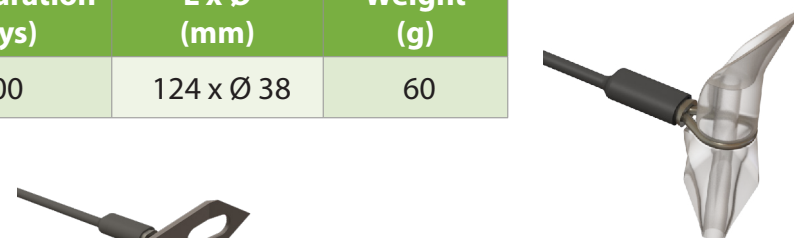
POP-UP MINIPAT WITH ANCHOR SUITE SPECIFICATION

Model	Depth	Temperature	Light Level	Accelerometer	Max. Duration (days)	L x Ø (mm)	Weight (g)
MiniPAT	✓	✓	✓	✓	800	124 x Ø 38	60

Anchor	Size	Dimensions (mm)
Domeier	Medium	20 L x 14 W
	Large	31 L x 20 W
Wilton	Small	38 L x 11 Ø
	Large	47 L x 13 Ø
Titanium (Ti)	Small	45 L x 14 W x 1.3 Thickness
	Large	64 L x 16 W x 1 Thickness

Anchor suite available for Wildlife Computers tags only.

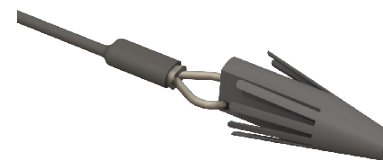
*** Contact us for project pricing.**



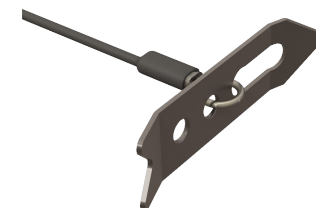
Wilton Anchor



Small Ti Anchor



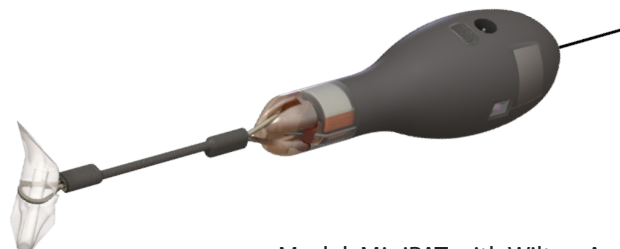
Domeier Anchor



Large Ti Anchor



Model: MiniPAT-348



Model: MiniPAT with Wilton Anchor

tags@wildlifecomputers.com
WildlifeComputers.com
+1 (425) 881-3048

8310 154th Ave NE, Suite 150
Redmond, WA, 98052 USA

This is a small representation of our available tags. Tag features and specifications subject to change without notice. Comparative scale is approximate. Argos antennas and sensor stalks not shown to length. © Wildlife Computers. All rights reserved.

v.19-07 1.2

To Learn More Call: +1 (425) 881-3048 or Email: tags@wildlifecomputers.com