

POP-UP MINIPAT WITH ANCHOR

SPECIFICATIONS

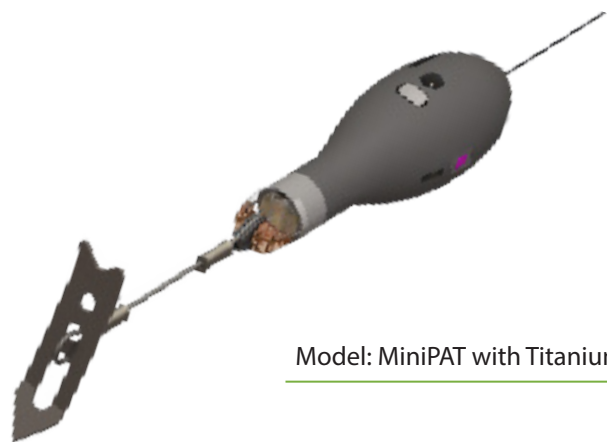
Model	Depth	Temperature	Light Level	Accelerometer	Max. Duration (days)	L x Ø (mm)	Weight (g)
MiniPAT	✓	✓	✓	✓	730	118 x Ø 38	61

Anchor	Size	Dimensions (mm)
Domeier	Medium	20 L x 10 W
	Large	31 L x 16 W
Wilton	Small	38 L x 11 Ø
	Large	47 L x 13 Ø
Titanium (Ti)	Small	45 L x 14 W x 1.3 Thickness
	Large	64 L x 16 W x 1 Thickness

Anchor suite available for Wildlife Computers tags only.



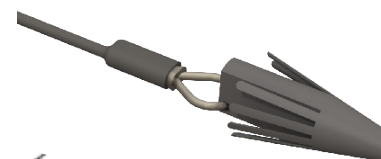
Model: MiniPAT-390



Model: MiniPAT with Titanium Anchor



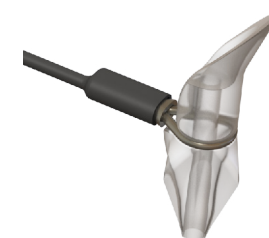
Small Ti Anchor



Domeier Anchor



Large Ti Anchor



Wilton Anchor

This is a small representation of our available tags. Tag features, colors, and specifications subject to change without notice. Comparative scale is approximate. Tags are not shown to scale. Lifespan estimates rely on programming, battery variability, temperature, power settings, features utilized, etc. © Wildlife Computers. All rights reserved. This is proprietary information and not to be reproduced, copied, or shared without written permission.

tags@wildlifecomputers.com
WildlifeComputers.com
+1 (425) 881-3048

8310 154th Ave NE, Suite 150
Redmond, WA, 98052 USA

v. 23-09

To Learn More Call: +1 (425) 881-3048 or Email: tags@wildlifecomputers.com