



PAYLOAD RECOVERY DEVICE PRODUCT SHEET

Animal and telemetry data are priceless but recovering that data can be challenging. The Payload Recovery Device is the best way to recover your data with minimal effort and disturbance to the animal.

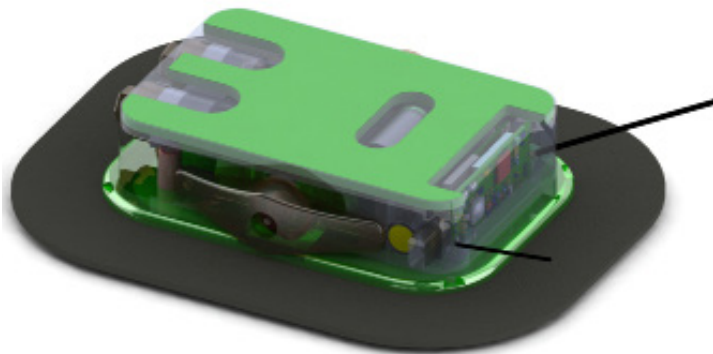
Designed for pinnipeds, the Payload Recovery Device can survive onshore abuse and depths up to 2,000 meters. There are many ways to find the device including Argos locations, a strobe light, or a UHF beacon. The Payload Recovery Device can be used multiple times so the same valuable payload can be used again right away.

The Payload Recovery Device is the only commercially available release system suitable for deployments on seals, sea lions, and fur seals. As a bonus, there are no shipping restrictions with the Payload Recovery Device unlike other squib-style release mechanisms.

Top Benefits of the Payload Recovery Device

- **Remote release**—radio triggered release from over 200 meters.
- **On-demand**—researcher initiates the release.
- **Rugged**—can withstand the abuse of large animals on the rookery.
- **Multi-use**—field refurbishment allows for multiple deployments.
- **Recovery aids**—Argos locations, UHF radio beacon, and strobe light.
- **Generic payload platform**—any device can be carried, limited only by size.
- **Pressure rated**—can survive up to 2,000 meters
- **Shippable**—no shipping restrictions.

Model: PRD-RP
117 mm x 86 mm x 28 mm



PAYLOAD RECOVERY DEVICE – CONTINUED

Payload Recovery Device Controller

The Wildlife Computers Remote Release Controller (RRC) is a hand-held transceiver used to trigger the Payload Recovery Device up to 200 m away. The RRC will send and receive transmissions, allowing limited two-way communications.

The RRC is powered by a rechargeable battery and allows for eight hours of continuous operation. The release command will trigger the release of the tag specified by the serial number.



Technical Specifications

Animal attachment	Epoxy, glue, or other adhesive
Payload attachment	Epoxy, glue, or other adhesive
Sensors	None
Wet/dry sensor	Yes
Dimensions (no payload) (LxWxH)	117 mm x 86 mm x 28 mm
Weight in air (no payload)	343 grams
Payload platform	105 mm x 67 mm
Pressure rating	2,000 m
Operating temperature range	-20° C to 50° C
Memory/archive	None
Operating life	Years—duration depends on device settings
Transmitter frequency	401.678 MHz
Transmitter power output	500 mW
Receiver sensitivity	-97 dBm
Recovery beacon	Yes
Recovery strobe	Yes

To Learn More Call: +1 (425) 881-3048 or Email: tags@wildlifecomputers.com